

STANDARD DEPARTURE CHART -
INSTRUMENT (SID) - ICAO

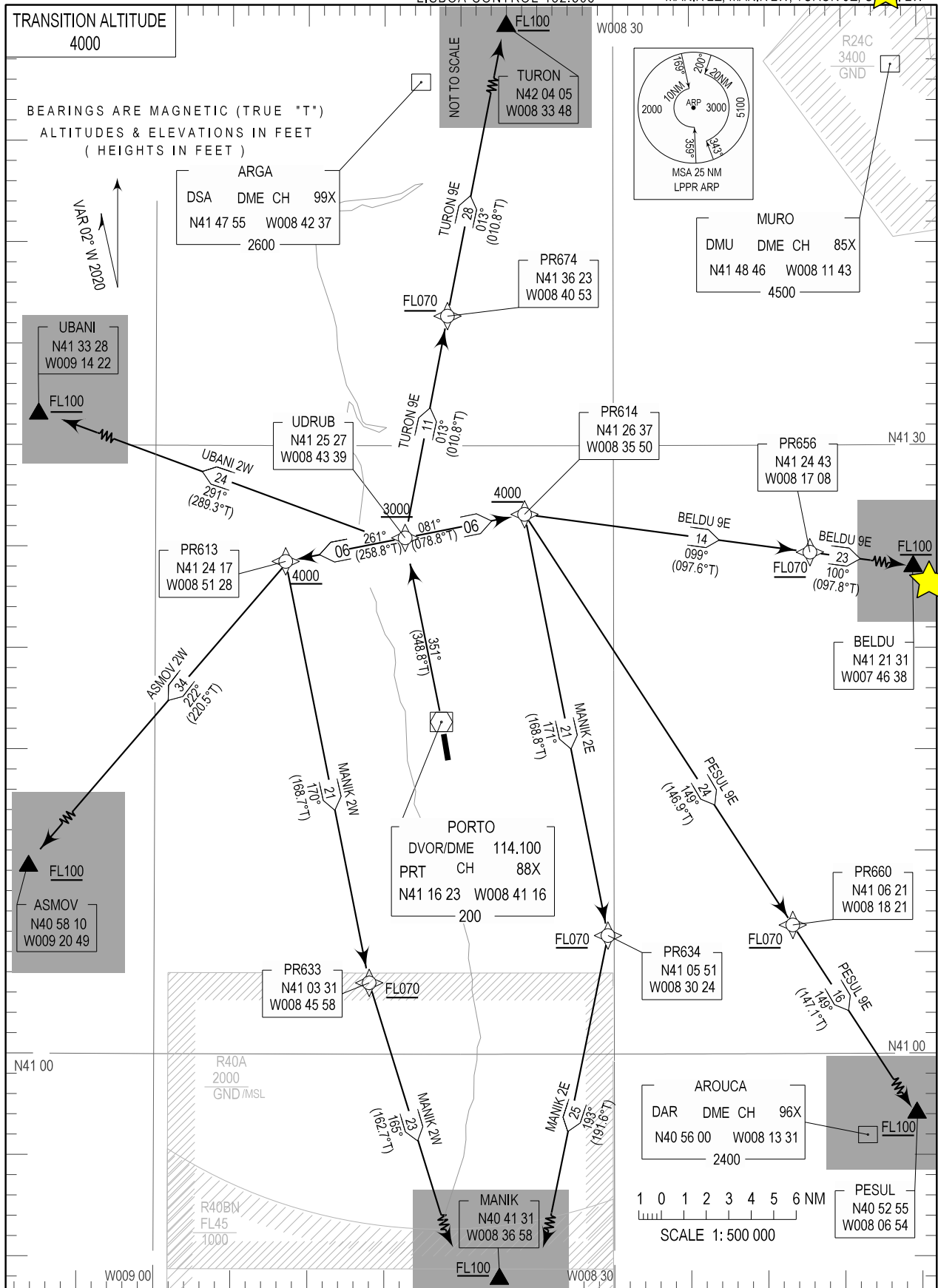
PORTO DEP INFORMATION 121.680
PORTO TOWER 118.005
PORTO APPROACH 120.910
LISBOA CONTROL 132.305

PORTO, Francisco Sá Carneiro (LPPR)

RNAV RWY 35


ASMOV 2W, BELDU 9E, PESUL 9E

MANIK 2E, MANIK 2W, TURON 9E, UDRUB 2W



AD name inserted, new ATIS FREQ.

SID Procedure Coding Table

Path Terminator	Waypoint			Course/Track MAG(True)	Dist NM	Turn Direction	Constraints		Nav Specs	Remarks
	Identifier	Flyover	Coordinates				Level	Speed		
Porto SID RNAV 1 RWY 35 – BELDU 9E										
CF	UDRUB	-	412527.33N 0084339.16W	351 (348.8)	-	-	+3000ft	-	RNAV 1	
TF	PR614	-	412636.94N 0083549.57W	081 (078.8)	6.00	Right	+4000ft	-	RNAV 1	
TF	PR656	-	412443.11N 0081707.95W	099 (097.6)	14.19	Right	+FL070	-	RNAV 1	
TF	BELDU	-	412130.63N 0074638.02W	100 (097.8)	23.18	-	+FL100	-	RNAV 1	
Porto SID RNAV 1 RWY 35 – ASMOV 2W										
CF	UDRUB	-	412527.33N 0084339.16W	351 (348.8)	-	-	+3000ft	-	RNAV 1	
TF	PR613	-	412417.18N 0085128.48W	261 (258.8)	6.00	Left	+4000ft	-	RNAV 1	
TF	ASMOV	-	405809.81N 0092049.33W	222 (220.5)	34.24	Left	+FL100	-	RNAV 1	
Porto SID RNAV 1 RWY 35 – PESUL 9E										
CF	UDRUB	-	412527.33N 0084339.16W	351 (348.8)	-	-	+3000ft	-	RNAV 1	
TF	PR614	-	412636.94N 0083549.57W	081 (078.8)	6.00	Right	+4000ft	-	RNAV 1	
TF	PR660	-	410620.52N 0081821.18W	149 (146.9)	24.17	Right	+FL070	-	RNAV 1	
TF	PESUL	-	405255.32N 0080654.37W	149 (147.1)	15.97	-	+FL100	-	RNAV 1	
Porto SID RNAV 1 RWY 35 – MANIK 2E										
CF	UDRUB	-	412527.33N 0084339.16W	351 (348.8)	-	-	+3000ft	-	RNAV 1	
TF	PR614	-	412636.94N 0083549.57W	081 (078.8)	6.00	Right	+4000ft	-	RNAV 1	
TF	PR634	-	410550.74N 0083024.43W	171 (168.8)	21.16	Right	+FL070	-	RNAV 1	
TF	MANIK	-	404130.65N 0083658.21W	193 (191.6)	24.82	Right	+FL100	-	RNAV 1	
Porto SID RNAV 1 RWY 35 – MANIK 2W										
CF	UDRUB	-	412527.33N 0084339.16W	351 (348.8)	-	-	+3000ft	-	RNAV 1	
TF	PR613	-	412417.18N 0085128.48W	261 (258.8)	6.00	Left	+4000ft	-	RNAV 1	
TF	PR633	-	410330.97N 0084558.39W	170 (168.7)	21.17	Left	+FL070	-	RNAV 1	
TF	MANIK	-	404130.65N 0083658.21W	165 (162.7)	23.03	Left	+FL100	-	RNAV 1	
Porto SID RNAV 1 RWY 35 – UBANI 2W										
CF	UDRUB	-	412527.33N 0084339.16W	351 (348.8)	-	-	+3000ft	-	RNAV 1	
TF	UBANI	-	413328.27N 0091422.27W	291 (289.3)	24.44	Left	+FL100	-	RNAV 1	
Porto SID RNAV 1 RWY 35 – TURON 9E										
CF	UDRUB	-	412527.33N 0084339.16W	351 (348.8)	-	-	+3000ft	-	RNAV 1	
TF	PR674	-	413623.27N 0084053.12W	013 (010.8)	11.12	Right	+FL070	-	RNAV 1	
TF	TURON	-	420404.53N 0083348.30W	013 (010.8)	28.18	-	+FL100	-	RNAV 1	

Porto SID RNAV 1 RWY 35

Designator	Route	After Take-off		Remarks
		Climb to ALT/FL	Contact	
BELDU9E	After take-off proceed to UDRUB. Turn right to PR614 – PR656 – BELDU.	FL100	Porto Approach 120.910 MHZ	
ASMOV2W	After take-off proceed to UDRUB. Turn left to PR613 – ASMOV.			
PESUL9E	After take-off proceed to UDRUB. Turn right to PR614 – PR660 – PESUL.			
MANIK2E	After take-off proceed to UDRUB. Turn right to PR614 – PR634 – MANIK.			
MANIK2W	After take-off proceed to UDRUB. Turn left to PR613 – PR633 – MANIK.			
UBANI2W	After take-off proceed to UDRUB. Turn left to UBANI.			
TURON9E	After take-off proceed to UDRUB. Turn right to PR674 – TURON.			